



# MOUNTAIN ROAD

ESTATES





# Mountain Road Estates

Welcome to Mountain Road Estates, an exclusive collection of luxury estate homes set within the breathtaking landscape of Revelstoke Mountain Resort. Offering convenient resort access, these architecturally stunning duplexes redefine alpine living with sophisticated design, premium finishes, and panoramic mountain views.

## BEDROOMS

5

## BATHROOMS

5.5

## SQUARE FOOTAGE

Approximately 3,500 SQ FT

For additional information about this property please contact  
[realestate@revelstokemountainresort.com](mailto:realestate@revelstokemountainresort.com)









# Revelstoke Map

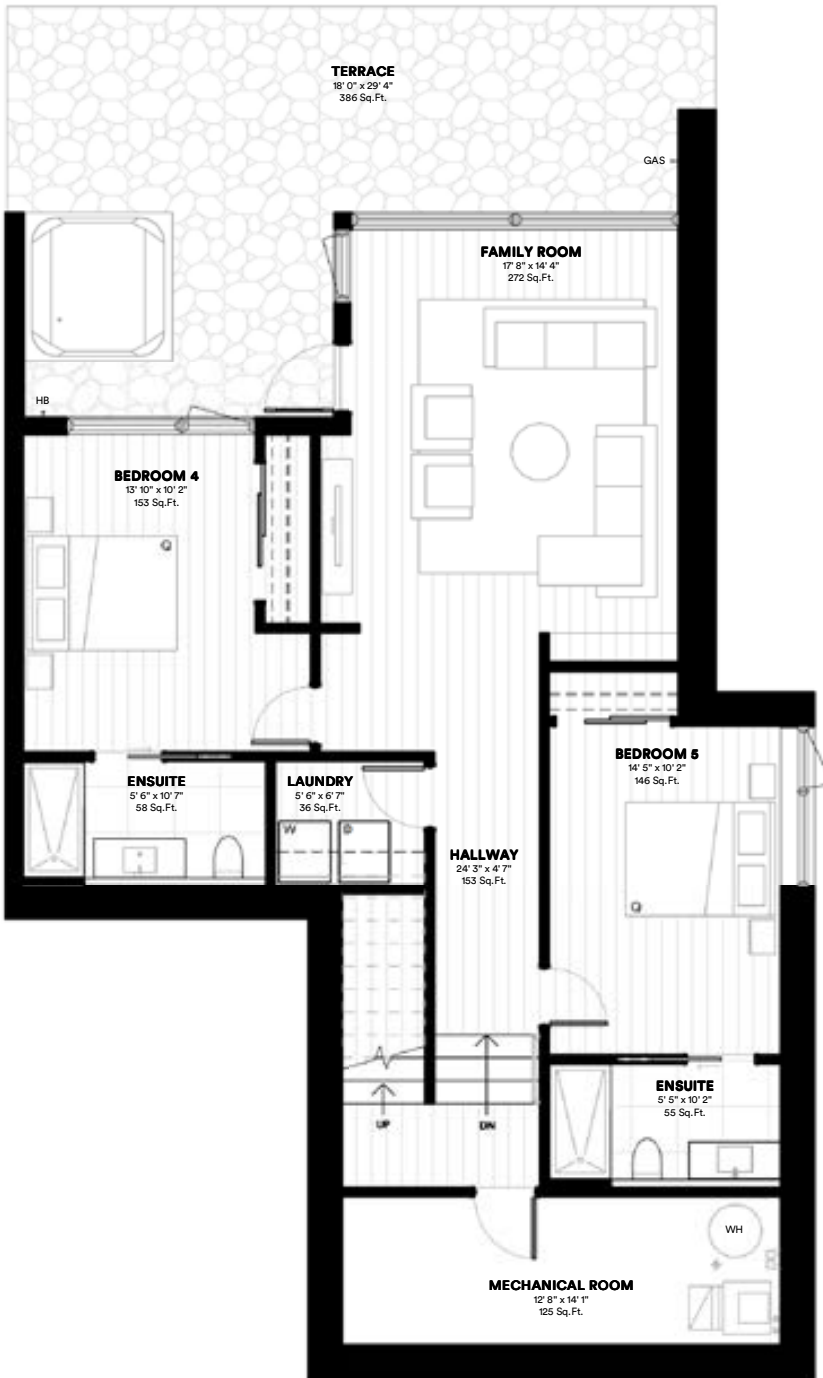


# Site Plan



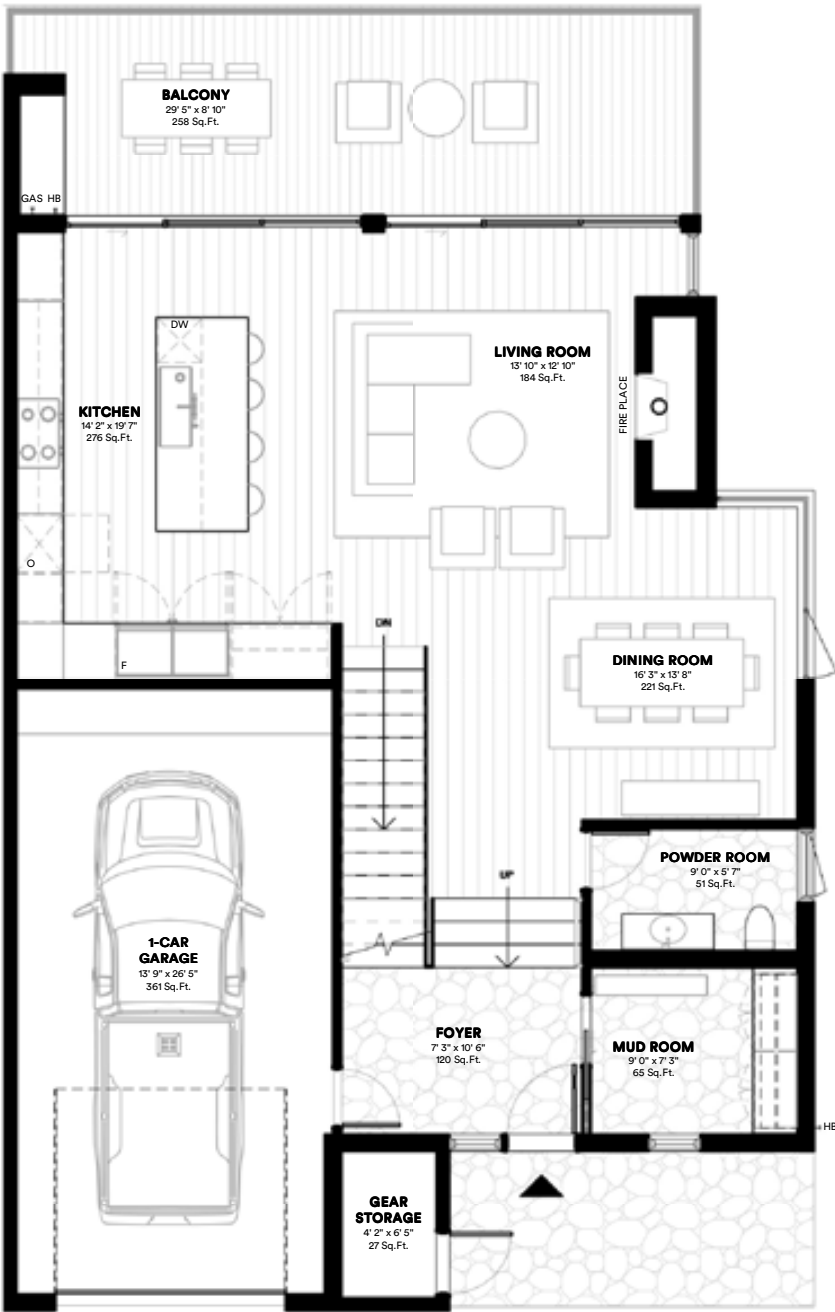


# Floor Plan



**BASEMENT FLOOR**

1147 SQ FT  
+176 SQ FT MEC



**GROUND FLOOR**

1098 SQ FT  
+389 SQ FT Garage + Storage



**SECOND FLOOR**

1230 SQ FT

# Interior Design Package - Aurora





# Interior Design Package - Boreal







## Mountain Road Estates

At Mountain Road Estates, we're redefining on-resort luxury with a limited collection of sophisticated estate homes in the heart of Revelstoke Mountain Resort. This exclusive enclave is designed for those who seek the ultimate blend of adventure, relaxation, and investment opportunity—all within one of North America's premier mountain destinations.

Whether you're drawn by the thrill of the mountains, the promise of a high-yield investment, or the unparalleled resort lifestyle, Mountain Road Estates offers an incredible opportunity to own in Revelstoke's most desirable on-mountain community.

### CONTACT

Nicky Sellinger  
**Senior Real Estate Specialist**  
nsellinger@revelstokemountainresort.com  
778-252-8435

Dominik Hubaczek  
**Senior Real Estate Specialist**  
dhubaczek@revelstokemountainresort.com  
403-397-5509





These materials do not constitute an offer or solicitation of any kind, nor are they intended to be distributed in or constitute an offer to sell real estate or real estate securities to residents of any jurisdiction where prior registration, license, or advance qualification is required but not yet completed. Revelstoke Mountain Resort reserves the right to make changes, corrections, cancellations, and/or improvements to the content of these materials, and the products, services, and programs described herein at any time without notice, including after confirmation of a transaction. The images are subject to change as the design process evolves, as the drawings are conceptual in nature. All dimensions are approximate. All depictions of furniture, appliances, counters, soffits, floor coverings, and other matters of detail and/or specification, including, without limitation, items of finish and decoration, are representations only and are not necessarily items that are included in each unit.