



MOUNTAIN ROAD

ESTATES



Mountain Road Estates

Welcome to Mountain Road Estates, an exclusive collection of luxury estate homes set within the breathtaking landscape of Revelstoke Mountain Resort. Offering unparalleled ski-in, ski-out access, these architecturally stunning duplexes redefine alpine living with sophisticated design, premium finishes, and panoramic mountain views.

BEDROOMS

5

BATHROOMS

6 Full

SQUARE FOOTAGE

Approximately 3,500 SQ FT

For additional information about this property please contact
realestate@revelstokemountainresort.com





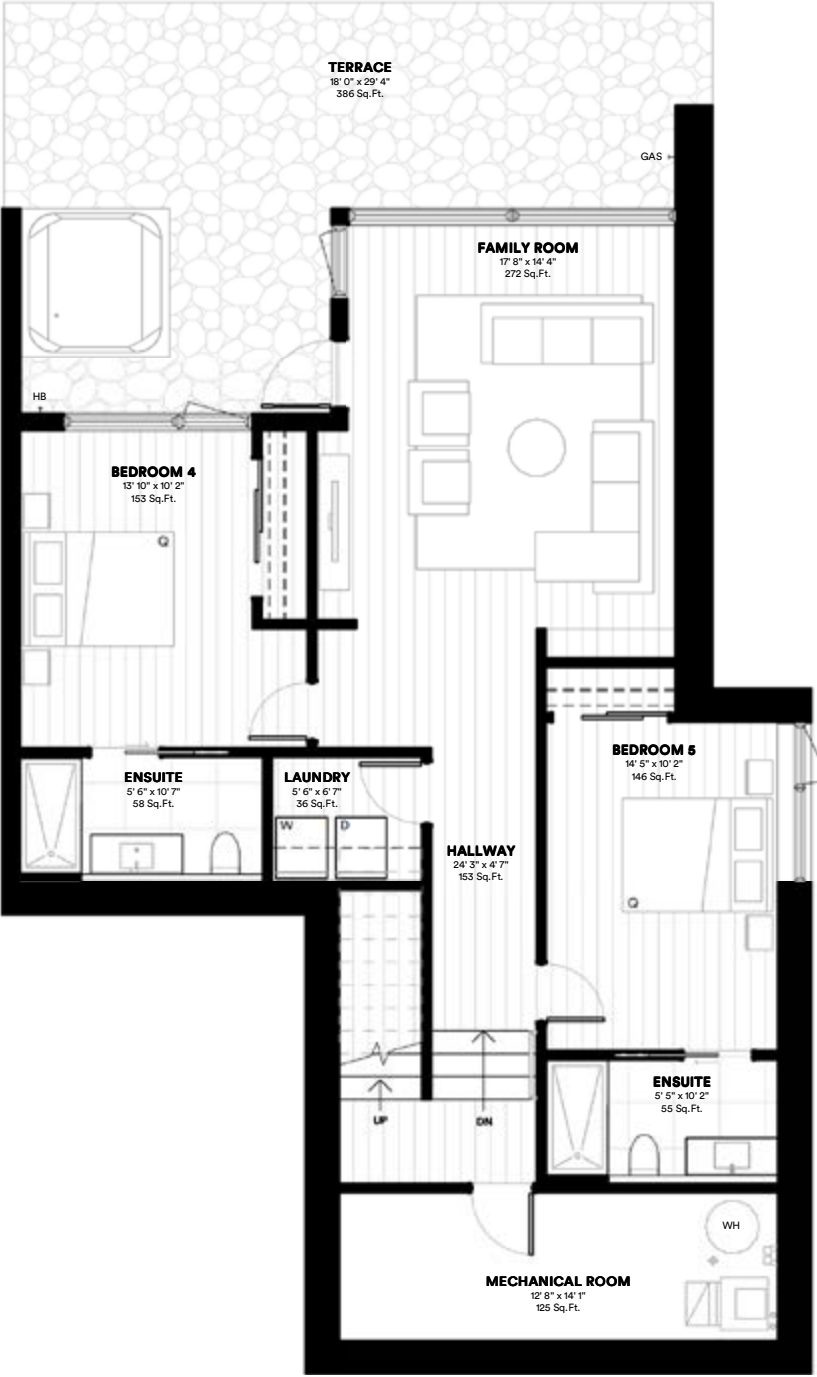
Revelstoke Map



Site Plan

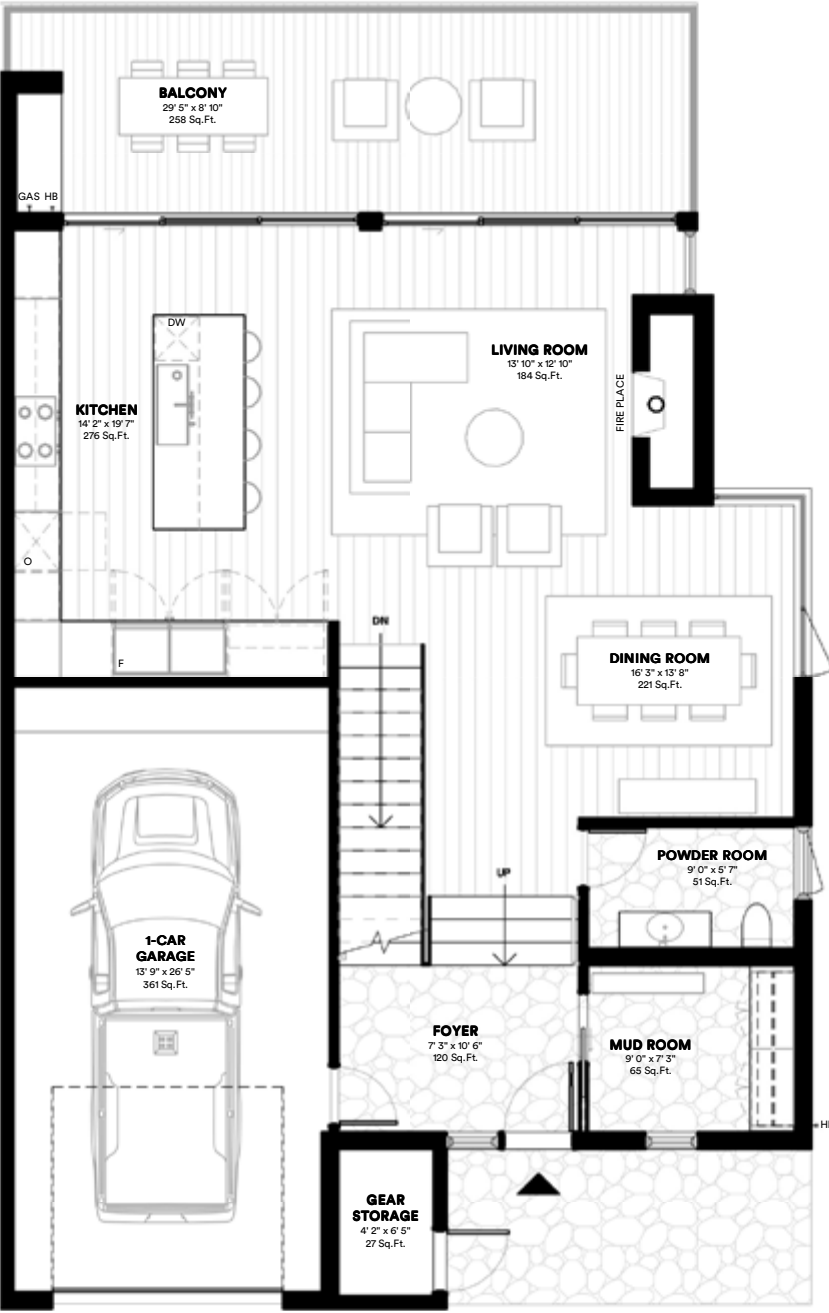


Floor Plan



BASEMENT FLOOR

1147 SQ FT
+176 SQ FT MEC



GROUND FLOOR

1098 SQ FT
+389 SQ FT Garage + Storage



SECOND FLOOR

1230 SQ FT

Interior Design Package - Aurora



Interior Design Package - Boreal





Mountain Road Estates

At Mountain Road Estates, we're redefining on-resort luxury with a limited collection of sophisticated estate homes in the heart of Revelstoke Mountain Resort. This exclusive enclave is designed for those who seek the ultimate blend of adventure, relaxation, and investment opportunity—all within one of North America's premier mountain destinations.

Whether you're drawn by the thrill of the mountains, the promise of a high-yield investment, or the unparalleled resort lifestyle, Mountain Road Estates offers an incredible opportunity to own in Revelstoke's most desirable on-mountain community.

CONTACT

Nicky Sellinger
Senior Real Estate Specialist
nsellinger@revelstokemountainresort.com
778-252-8435

Dominik Hubaczek
Senior Real Estate Specialist
dhubaczek@revelstokemountainresort.com
403-397-5509



These materials do not constitute an offer or solicitation of any kind, nor are they intended to be distributed in or constitute an offer to sell real estate or real estate securities to residents of any jurisdiction where prior registration, license, or advance qualification is required but not yet completed. Revelstoke Mountain Resort reserves the right to make changes, corrections, cancellations, and/or improvements to the content of these materials, and the products, services, and programs described herein at any time without notice, including after confirmation of a transaction. The images are subject to change as the design process evolves, as the drawings are conceptual in nature. All dimensions are approximate. All depictions of furniture, appliances, counters, soffits, floor coverings, and other matters of detail and/or specification, including, without limitation, items of finish and decoration, are representations only and are not necessarily items that are included in each unit.